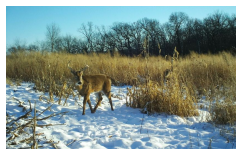
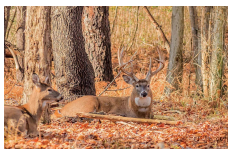




## 2026 Spring Deer Hunting Habitat Pricing

[www.michigantimbershack.com](http://www.michigantimbershack.com)

[sales@michigantimbershack.com](mailto:sales@michigantimbershack.com)



**Pre-orders paid in full by April 1st receive a 10% discount off entire order!**

### Native and Wildlife-Friendly Cover & Bedding Plants

These plants help create dense, protective areas where deer bed down, feel secure, and travel through.

Perennial and key for hunting habitat.

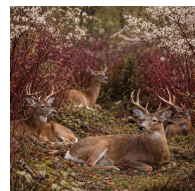
		#1 gallon pot	Plugs
Switchgrass	Tall dense grass, excellent for bedding cover.	\$7 or 6/\$36	25 for \$99, 50 for \$169
Big Bluestem	Tall prairie grass that forms thick stands deer use for bedding.	\$7 or 6/\$36	25 for \$99, 50 for \$169
Virginia Wild Rye	Adds structure and height for cover.	\$7 or 6/\$36	25 for \$99, 50 for \$169
Indiangrass	Adds structure and height for cover.	\$7 or 6/\$36	25 for \$99, 50 for \$169

### Native Shrubs & Woody Plants for Cover + Browse

Shrubs offer dense, long-term cover and food browsing value (twigs, leaves, berries):

		Size/Price
Red Twig Dogwood	Great for wetter spots, offering browse, cover and structure.	#3 gallon pot - \$39
Hazelnut	Excellent for bedding and security. Nutritional powerhouse.	#3 gallon pot - \$29
Serviceberry	Provides early spring flowers and edible berries for deer.	#7 gallon pot - \$79
Blackhaw Viburnum	Offers edible berries and good cover	#7 gallon pot - \$79
Witch Hazel	Late season browsing, ideal rubbing spot, natural scent blocker, enhanced cover	#5 gallon pot - \$49

FOR MORE SHRUB OPTIONS, SEE OUR SHRUB PRICE PAGE



### Screening Trees & Long-Term Cover

Evergreens provide year-round shelter and cover. Mix with browse producing plants for diverse habitat.

		Small Evergreens	Fiber Pot (biodegradable pot)
Norway Spruce	Evergreen screens, especially in mixed plantings	2-3' Bundle of 10 - \$100	3-4' \$69, 4-5' \$99, 5-6' \$149
Eastern White Pine	Evergreen shelter and winter cover	#2g \$15, #3g \$39	3-4' \$69, 4-5' \$99, 5-6' \$149
Black Hills Spruce	Winter cover and security	NA	3-4' \$69, 4-5' \$99, 5-6' \$149

FOR MORE EVERGREEN OPTIONS, SEE OUR EVERGREENS PRICE PAGE

### Fruit & Nut Tree Packages

Planting these natural food sources improves daylight movement and increases early and late season holding power.

Apples, pears, chestnuts #7g pot, 3/4" caliper, 5-6' tall | Persimmon #3g pot, 5/8" caliper, 4-5' tall | Larger sizes available

		Package Price
Early Season Draw	(2) Gala Apple, (2) Liberty Apple, (1) Bartlett Pear, (1) Ayers Pear	\$294
Rut Magnet	(4) American Persimmon, (1) Fuji Apple, (1) Golden Delicious	\$254
Late Season Hold	(2) Fuji Apple, (2) Stayman Winesap, (1) Colossal Chesnut, (1) Nevada Chestnut	\$314
Small Acreage Kill Plot	(2) 4n1 Apple, (1) Bartlett Pear, (1) Kieffer Pear	\$217

FOR MORE FRUIT TREE OPTIONS, SEE OUR FRUIT TREE PRICE PAGE



### Oak Trees

A diverse range of oak species ensures a consistent food supply throughout the season, as different types of oaks drop at different times.

Acorns provide a vital high energy food source and help deer build necessary winter fat reserves.

Burr Oak (white)	Mid season dropper. Early age producer (in some cases). Large acorns.	2" caliper \$299   3.5" caliper \$449
Northern Red Oak	Late season dropper. Adaptable to various soils.	#5g \$49   2" caliper \$299   3" caliper \$399
Pin Oak (red)	Late season dropper. Tolerates clay soil and flood areas that dry out in summer.	#5g \$49   2" caliper \$299   3" caliper \$399
Sawtooth Oak (red)	Early dropper. Early age producer. Plant near woodland or field edges.	2" caliper \$299   3" caliper \$399
Shumard Oak (red)	Late Season dropper. Adaptable to various soils.	#5g \$49   2" caliper \$299   3" caliper \$399
Swamp White Oak	Early season dropper. Early age producer. Thrives in wet soils.	#5g \$49   2" caliper \$299   3" caliper \$399
Willow Oak (red)	Late season dropper. Tolerates wet soil.	#5g \$49   2" caliper \$299   3" caliper \$399

FOR MORE OAK TREE OPTIONS, SEE OUR OAK TREE PRICE PAGE

### Tips for Success:

**Protection is Key:** Young plants need protection (fencing, tubes) as deer will heavily browse them, hindering establishment.

**Placement Matters:** Plant near field edges, travel corridors, or bedding areas where deer frequent.

**Mix & Match:** Combine trees/shrubs with different features like fruit/berries, fall color, and dense foliage for year-round benefits.